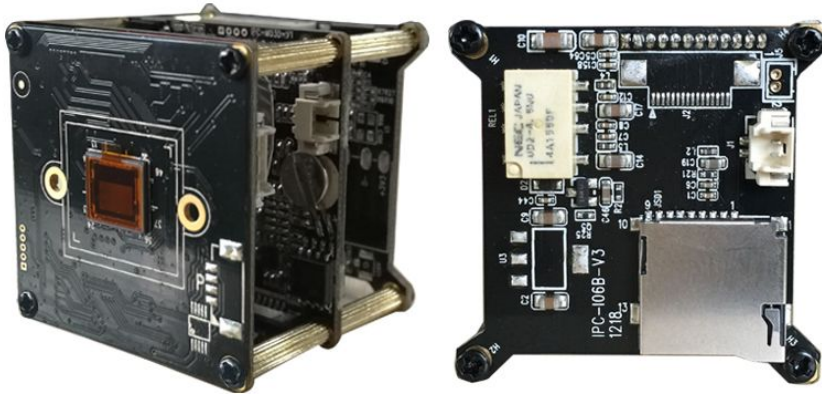


# S290H16D-L26-BT3

## 2.0 megapixel WDR 3 Boards IP Camera Module, Hi3516D + SONY IMX290 CMOS

1/2.8" 2.0 Megapixels Progressive Scan Sony IMX290 CMOS, Hisilicon Hi3516D Chipset, the highest resolution of 1920\*1080, 0.001 Lux@F1.2 (color);38X38mm 3 boards; RS485, TF card slot, Optional Motorized lens,IR - CUT (day/night), adapt Bullet, Dome; H.264 or H.265 video coding, double stream, ONVIF 2.4, be compatible many NVR and platform management software.



## Features

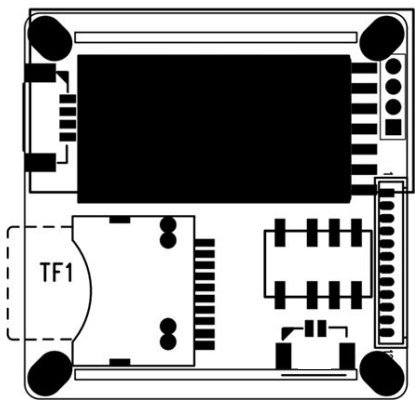
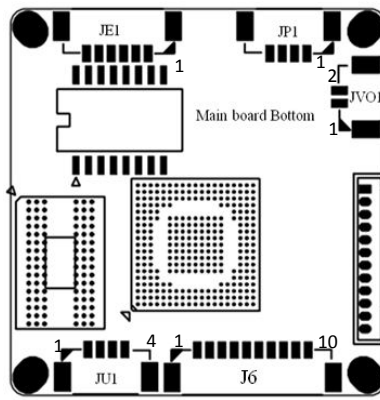
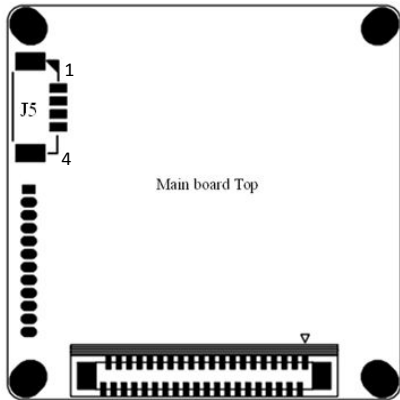
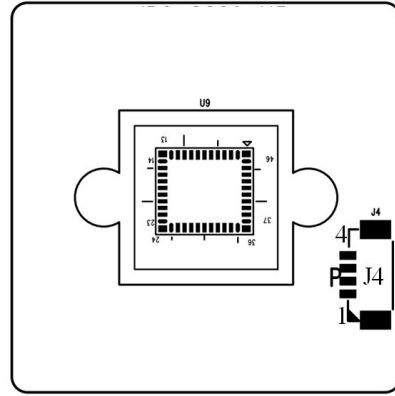
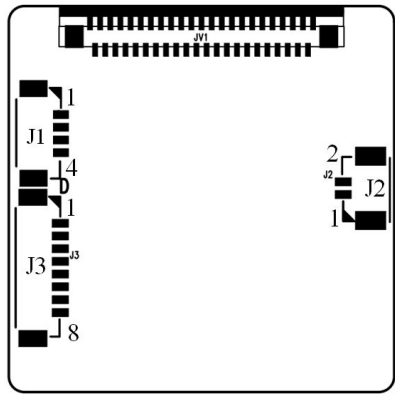
- > Hisilicon Hi3516D
- > 1/2.8" 2.0 Megapixels Progressive Scan Sony IMX290 CMOS
- > Max 50/60fps@2.0 Megapixels (1920x1080)
- > H.264/H.265 & MJPEG dual-stream encoding
- > Privacy Mask, Motion Detection
- > Support Onvif 2.4 protocol
- > TF Card Slot
- > WDR > 120dB
- > BLC

## Specifications

| Model                    | S290H16D-L26-BT3  |
|--------------------------|---|
| <b>Camera</b>            |   |
| Image Sensor             | 1/2.8" 2.0 Megapixels Progressive Scan Sony IMX290 CMOS |
| CPU                      | Hisilicon 3516D   |
| Effective Pixels         | 1920(H)x1080(V)   |
| Scanning System          | Progressive   |
| Electronic Shutter Speed | Auto (1/25 ~ 1/10000s)                                  |
| Min. Illumination        | 0.001Lux/F1.2 (Color)                                   |
| S/N Ratio                | ≥50db(AGC OFF)  |
| <b>Camera Features</b>   |   |
| Day/Night                | Auto(ICR)/Color/B/W                                     |
| WDR                      | > 120dB   |
| White Balance            | Auto  |
| Gain Control             | Auto  |

|                            |  |   |
|----------------------------|--|---|
| Noise Reduction            | 3D   |   |
| Privacy Masking            | Up to 4 areas  |   |
| <b>Video</b>               |  |   |
| Compression                | H.264/MJPEG/H.265  |   |
| Resolution                 | 1080P(1920×1080)/720P(1280×720)/D1(704×576)/VGA(640*480)/QVGA(320×240) |   |
| Frame Rate                 | Main Stream  | 1920×1080(1 ~ 25/30fps), 1280×720(1 ~ 25/30fps) |
|                            | Sub Stream   | D1/VGA/QVGA(1 ~ 25/30fps)                       |
| Bit Rate                   | 32KB ~16Mbps, support VBR, CBR   |   |
| Text Overlay               | Channel, Date & Time, Bit Rate   |   |
| <b>Network</b>             |  |   |
| Data Storage               | Video record, Picture format   |   |
| Trigger                    | Manual, Automatic(motion detection, alarm, schedule, cycle )           |   |
| Alarm data transmission    | FTP, E-mail, Browser, CMS  |   |
| Protocol                   | TCP/IP、UDP、RTP、RTSP、RTCP、HTTP、DNS、DDNS、DHCP、FTP、NTP、PPPOE、SMTP、UPNP    |   |
| ONVIF                      | ONVIF 2.4  |   |
| Max. User Access           | 8 users, IE, Google, Firefox   |   |
| Smart Phone                | Windows Mobile, iPhone, iPad, Android                                  |   |
| <b>Auxiliary Interface</b> |  |   |
| Audio in                   | Support  |   |
| Audio out                  | Support  |   |
| BNC Video out              | Support  |   |
| RS422/RS485                | Support  |   |
| USB                        | Support  |   |
| Alarm in                   | Support  |   |
| Alarm out                  | Support  |   |
| IO Interface               | Reset  |   |
| Memory Card                | Max 32G TF Card  |   |
| <b>General</b>             |  |   |
| Power Supply               | DC12V / PoE (802.3af)  |   |
| Power Consumption          | <3W  |   |
| Working Environment        | -20°C~+55°C , Less than 90% RH   |   |
| Dimensions                 | 38 x 38 x 35mm   |   |
| Weight                     | 0.2kg  |   |

## Connector



**JP1 Power Supply Connector**

|   |       |
|---|-------|
| 1 | DC12V |
| 2 | CMT_R |
| 3 | CMT_T |
| 4 | GND   |

**JE1 Network Connector**

|   |                                       |
|---|---------------------------------------|
| 1 | RJ45_1                                |
| 2 | RJ45_2                                |
| 3 | RJ45_3                                |
| 4 | RJ45_6                                |
| 5 | Network Connected Light (Green light) |
| 6 | Network Status Light (Yellow light)   |

**J1 DC Auto-iris Connector**

|   |         |
|---|---------|
| 1 | Drive - |
| 2 | Damp-   |
| 3 | Damp+   |
| 4 | Drive + |

**J2 IR-cut Connector**

|   |                          |
|---|--------------------------|
| 1 | IR-CUT Control Signal 5V |
| 2 | IR-CUT Control Signal 5V |

**J3 Motorized Lens Connector (For AZ Series and lens YT2812FB.ICR-J-6)**

|   |          |
|---|----------|
| 1 | Focus A- |
| 2 | Focus A+ |
| 3 | Zoom A-  |

|                                    |                                     |
|------------------------------------|-------------------------------------|
| 4                                  | Zoom A+                             |
| 5                                  | Zoom B+                             |
| 6                                  | Zoom B-                             |
| 7                                  | Focus B-                            |
| 8                                  | Focus B+                            |
| <b>J4 P-Iris Connector</b>         |                                     |
| 1                                  | IRIS A-                             |
| 2                                  | IRIS B+                             |
| 3                                  | IRIS A+                             |
| 4                                  | IRIS B-                             |
| <b>J5 IR Light Board Connector</b> |                                     |
| 1                                  | IR Light Board Power Supply (12V)   |
| 2                                  | GND                                 |
| 3                                  | IR Feedback Signal Input (0.8V-12V) |
| 4                                  | IC PWM Control                      |
| <b>JV01 BNC Video out</b>          |                                     |
| 1                                  | BNC Video out                       |
| 2                                  | GND                                 |
| <b>J6 Functions Connector</b>      |                                     |
| 1                                  | Audio In (MIC/ Line )               |
| 2                                  | GND (Audio)                         |
| 3                                  | Audio Out                           |
| 4                                  | GND                                 |
| 5                                  | Reset                               |
| 6                                  | Alarm In                            |
| 7                                  | Alarm Out -                         |
| 8                                  | Alarm Out +                         |
| 9                                  | RS_485+                             |
| 10                                 | RS_485-                             |
| <b>JU1</b>                         |                                     |
| 1                                  | GND                                 |
| 2                                  | USB_D-                              |
| 3                                  | USB_D+                              |
| 4                                  | 5V Power Supply                     |